



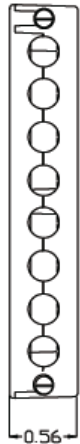
FEATURES

- designed to accommodate the Molex LFH series 160 and 200 pin connectors
- easy to assemble, tapped, zinc die cast tub and cover design optimizes shielding effectiveness
- unique cable braid captivation improves shield termination and enhances EMI/RFI attenuation
- multiple exits each with 0.250"/6.35mm ID. Custom cable exits are available, please consult factory
- custom logo option available
- supplied with 4-40 jackscrews, M3 available on request

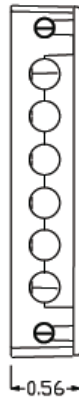


Size	A	
	in	mm
JDC160	2.865	72.77
JDC200	3.255	82.68

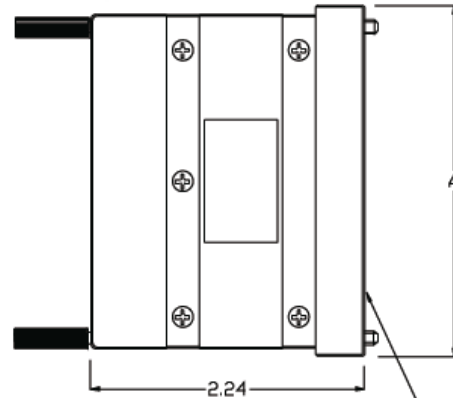
Molex is a trademark of Molex Inc.



8 Exit



6 Exit



Cover captivates LFH connector

JDC	XXX	X	-	X	X	X
160	160 pin LFH	B 6.4 exits	0	0 exits (fillers)	3	Ni. Plating
200	200 pin LFH	L 6.4 x .9.9 exits (JDC160)	1	1 exit (for ribbon multiple round cables)	1	4-40 jack screws
		R 6.4 x 53.3 rectangular exit (JDC160)	6	6 exits (JDC160)	2	M3 jack screws
			8	8 exits (JDC200)		

CDM Jevons Inc.

72 Proctor Rd, Schomberg, ON L0G 1T0 CANADA

Phone: +905-939-8001

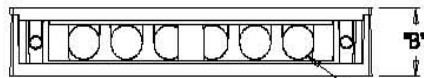
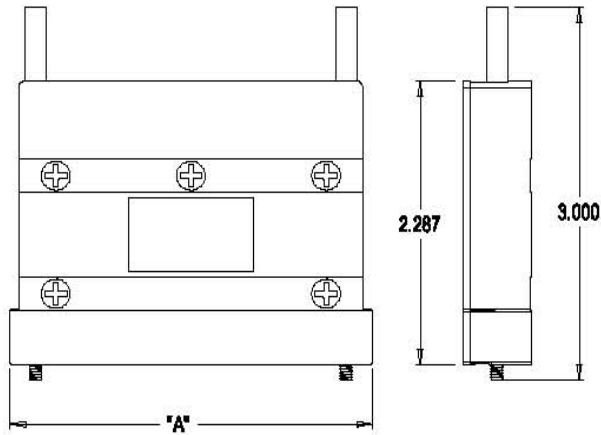
Fax: +905-939-8002

Toll Free Phone: 1-800-267-4492

Toll Free Fax: 1-877-267-4493

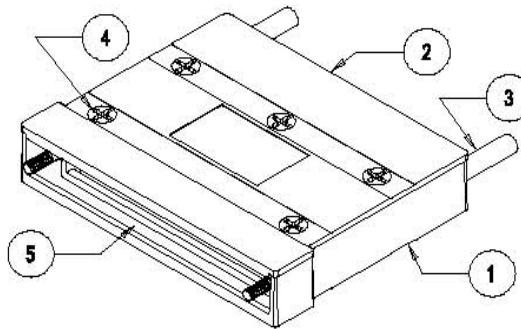
www.jevons.on.ca

Dimensions



6 exit JDC160 shown in this view

Characteristics



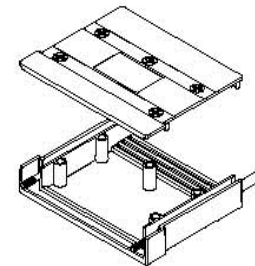
Application



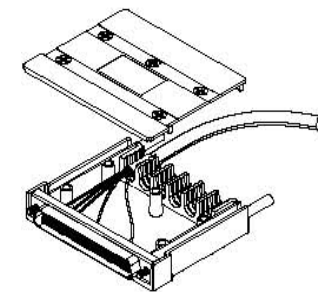
JDC 160X-XXX

JDC 200B-XXX

Consult factory for availability



JDC 160 Rectangular Rear Exit Version



Shown with cover elevated and optional LFH 160 connector installed.

P/N	Dimensions		Cable Exit
	A	B	
JDC 160 B . X X X	2.85	0.56	(6) at 0.25" dia.
JDC 160 L . X X X	2.85	0.56	(6) at 0.25" x 0.39" oval
JDC 160 R . X X X	2.85	0.56	(1) at 0.25" X 2.1"
JDC 200 B . X X X	3.25	0.56	(8) at 0.25" dia

Notes:

1. Tub is die cast zinc plated in Ni.
2. Cover is die cast zinc plated in Ni.
3. Jack screws are steel plated in Ni. With moulded heads. Thread is UNC 4-40 or M3.
4. Assembly screws are flat head UNC 4-40 plated in Ni.
5. Covers accommodate LFH type connectors in pin count shown in P/N.

Part Numbers

JDC	XXX	X	-	X	X	X			
160	160 pin LFH	B	.25" exits	0	0 exits (fillers)	3	Ni. Plating	1	4-40 jack screws
200	200 pin LFH	L	.25x.39" exits (JDC160)	1	1 exit (for ribbon or multiple round cables)	1		2	M3 jack screws
		R	.25 X 2.1" rectangular exit (JDC160)	6	6 exits (JDC160)				
				8	8 exits (JDC200)				

UNLESS OTHERWISE SPECIFIED
DIMENSIONS ARE IN INCHES.
TOLERANCES ARE:
FRACTIONS:
DECIMALS:
X .002
X .005
X .010
X .015
X .020

MATERIAL:
Various
FINISH:
Various



CDM Jevons Inc.
72 Proctor Rd,
Schomberg, ON L0G 1T0 CANADA
Phone Number: (905) 939-8001
Fax Number: (905) 939-8002
Website: www.jevons.on.ca

DESCRIPTION			
Die Cast LFH Connector Cover Kits			
SIZE	CDM CODE	ORD NO	REV
B	087MB	C - JDC XXX	1
SCALE	RELEASE DATE	WEIGHT	SHEET
NTS	3 Sep 02	na	1 of 1

APPROVALS	DATE
WS	