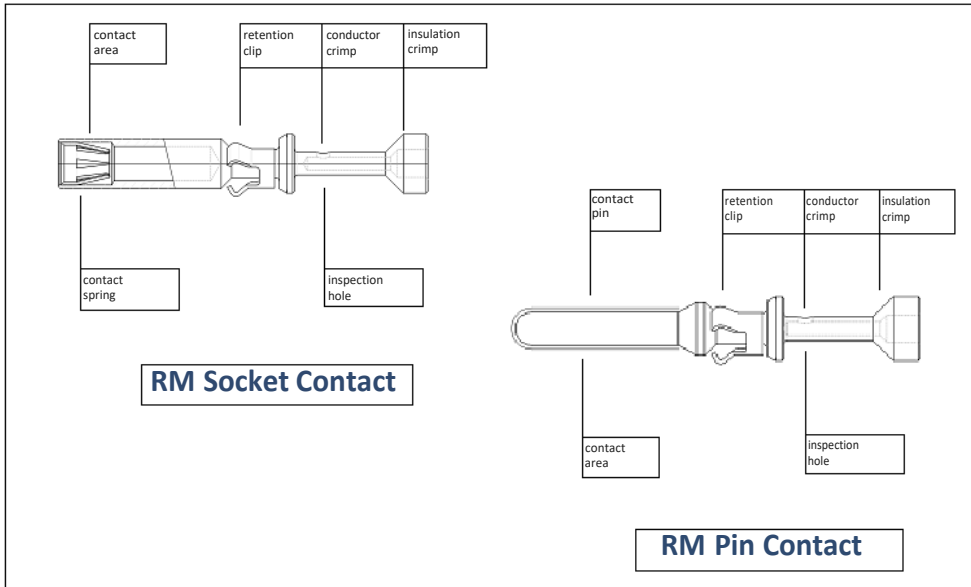
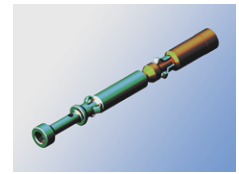




## (RM) Removable Machined Contacts



For special applications, for example harsh environments, C.D.M. offers a high-quality removable machined (RM) contact. It is a solid closed barrel machined pin and socket contact. Manufactured from a solid copper alloy, the contact features high mechanical stability and can carry a higher current than the stamped and formed contact. The six-finger gold-plated female contact guarantees a low and stable resistance over a great number of mating cycles at a low insertion force. The crimp barrel is designed for a high-quality, 8-imp (MIL spec.) crimp.

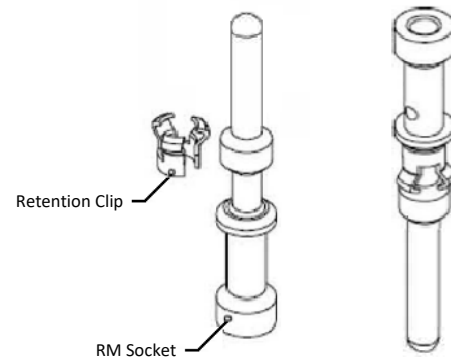
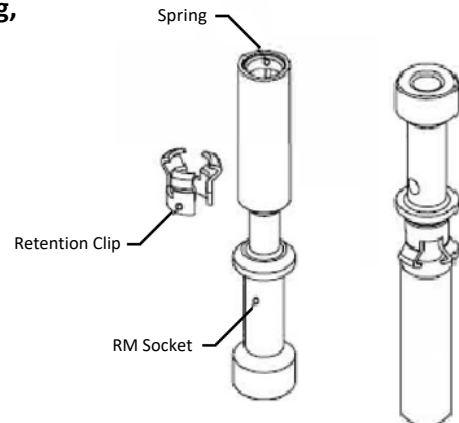
Contacts are available as female or male parts and for applications where two different contacts - male and female - are needed in a mixed configuration. For manual crimping a standard hand tool is available. For automated crimping, C.D.M. can be contacted for advice.

### Contact specification

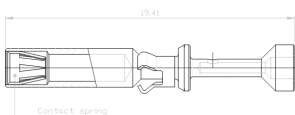
- Contact body: Copper alloy CuZn36Pb3
- Contact spring: Beryllium copper alloy 172
- Plating: 0.38  $\mu\text{m}$  Au (15  $\mu\text{inch}$ ) over Ni or
- 0.75  $\mu\text{m}$  Au (30  $\mu\text{inch}$ ) over Ni
- Retention spring: Stainless steel

### Performance characteristics

- Mating force: 1.0 - 4.5 N (0.225 - 1.0 lb)
- Mating cycles: Min. 1000 cycles
- Push-out force: Min. 100 N (22.5 lb) from a Pocan® housing
- Current rating: 13 A (for higher currents contact C.D.M.)
- Initial resistance: Max. 4 m $\Omega$ , measured according to IEC 512-2
- Initial voltage drop: Max. 35 mV at 13 A at 25°C ambient temp.
- Operating temperature: -55°C to 125°C for gold-plated contacts



Subject to change without prior notice



**CDM Jevons Inc.**  
**1986 Sideroad 15, Tottenham, ON L0G 1W0 CANADA**  
**Phone: +905-939-8001 Fax: +905-939-8002**  
**Toll Free Phone: 1-800-267-4492 Toll Free Fax: 1-800-267-4493**  
[www.jevons.on.ca](http://www.jevons.on.ca)

